



SHOCKWAVE DIRECT VIEW | BLACK SERIES

The SACO Shockwave V-Pix S is an innovative, lightweight, and bright video fixture designed to wrap around façades and architectural elements, transforming the built environment into a media experience. The versatile V-Pix S is available in 3 cluster distributions of high-performance RGB LED light sources, for variable viewing distances, luminous intensity and effects. Enabled by SACO's proprietary Micromapping™ fixture addressing, a V-Pix LED array can be configured in subgroups of pixels, enhancing definition while maintaining high luminance.

V-Pix S is a creative lighting tool that will display anything from static colors to dynamic video lighting effects; it is available with either 4, 8, or 12 LEDs in a polar array, a rugged material construction in a variety of finishes, as well as optional front cosmetic plates. Custom colors are available.

CONNECT THE DOTS	Introducing MICROMAPPING™ as a system-wide definition enhancer V-Pix S 8 can count as 1 or 2 pixels; V-Pix S 12 can be 1 or 3 pixels V-Pix S 4 is addressed as a whole, to maintain highest light intensity LEDs arranged in a polar array to minimize color shift due to viewing angles
KEEP RESOLUTIONS	SACO's proprietary V-Stream high-speed, high-resolution video pixel control 16-bit data sampling for silky smooth dimming, with 65,536 shades per color
LAST OUT	Sturdy construction built for outdoor endurance Auto-addressing for easy field-servicing
PIECE TOGETHER	Same mounting / joining bolt pattern as Black Series Spots family for accessory sharing Custom designed connector system enables Direct View fixture interoperability No tools required quick connectivity, built in snaps hold connectors in place Front and rear access possible for mounting and joining accessories Build the perfect performer by combining and stacking fixtures to suit
STAND THE HEAT	Efficient integral heat dissipation. No dirt traps.



ACTUAL SIZE

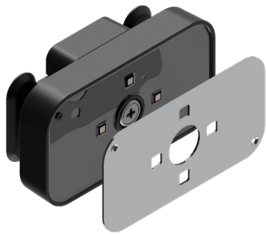
SACO



FEATURES GUIDE



COSMETIC PLATE



BODY/FACE

BLACK



SVP-S-RGB-4

GREY



-8

WHITE



-12

PHYSICAL

CONSTRUCTION

Injection molded UV-stabilized polycarbonate resin
Sturdy stainless steel hardware
Outdoor rated silicone rubber electronics potting
Optional cosmetic plate

MOUNTING

Central spring-loaded stainless steel captive screw (easily accessed on front)
4 heat installed brass inserts provide permanent threads (rear access for mounting and joining)

WEIGHT

0.15lbs (0.07kg)

THERMAL

OPERATING TEMP

-40°F to 140°F (-40°C to 60°C)

ELECTRICAL

INPUT VOLTAGE

44-54VDC (48 VDC Typical)

POWER

1.2W/2.4W/3.6W Maximum @ full white (V-Pix 4 / V-Pix 8 / V-Pix 12)

CONTROL INPUT

SACO SVB V-Brain controller, varying levels of power available
SACO V-Stream Video Protocol

CABLE

Round-to-round lead cables for carrying power and data to daisy chain starter block
Flat-to-flat jumper cables for low profile integration of systems

LIGHT OUTPUT

LED TYPE

High brightness 3-in-1 LEDs by Nichia

PIXEL TYPE

Integral: LED array addressed as a whole, to ensure highest intensity of light
Micromapping™: LED array addressed by subgroups, enabling enhanced definition while maintaining high luminance

PIXEL PITCH

Variable

PIXEL COUNT

Integral: 1 per fixture
Micromapping™: 2 / 3 per fixture (V-Pix 8 / V-Pix 12)
Please note Micromapping™ is a system-wide setting and has no effect on V-Pix 4
16-bit High Color per channel (65,536 shades per channel)
48-bit Deep Color per pixel (281 trillions shades per pixel)

COLOR DEPTH

VIEWING ANGLE

Beam angle: 110°
Field angle: 160°

SHOCKWAVE ACCESSORIES

CONTROLLERS

Multiple Shockwave video control options are available
See accessories guide for options

ADDITIONAL INFORMATION

CERTIFICATION

IP65 (as per IEC 60529-1 : 2013, when receptacles are capped or mated)
UL suitable for wet location (as per UL 8750 : 2015, CAN/CSA-C22.2 No.250.13 : 2012)
NRTL (as per UL 8750 : 2015, CAN/CSA-C22.2 No.250.13 : 2012)
CE (as per EN 62031 : 2008/A2 : 2015) Class 2

WARRANTY

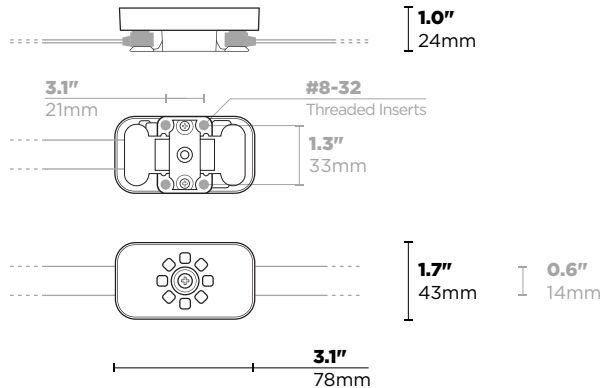
5 years

ORIGIN

Designed and made in North America



SPECIFICATIONS GUIDE



V-PIX S 8 PIXEL VERSION
(MOUNTING DIMENSIONS IN GREY)



Copyright © 2020 by SACO. All Rights Reserved. Shockwave® is a registered trademark of SACO. All specifications subject to change without notice. Information furnished by SACO is believed to be accurate and reliable. However, no responsibility or liability by SACO for its use, nor for infringement of patents or other rights of third parties which may result from its use. No license is granted by implication or otherwise under any patent or other rights by SACO.

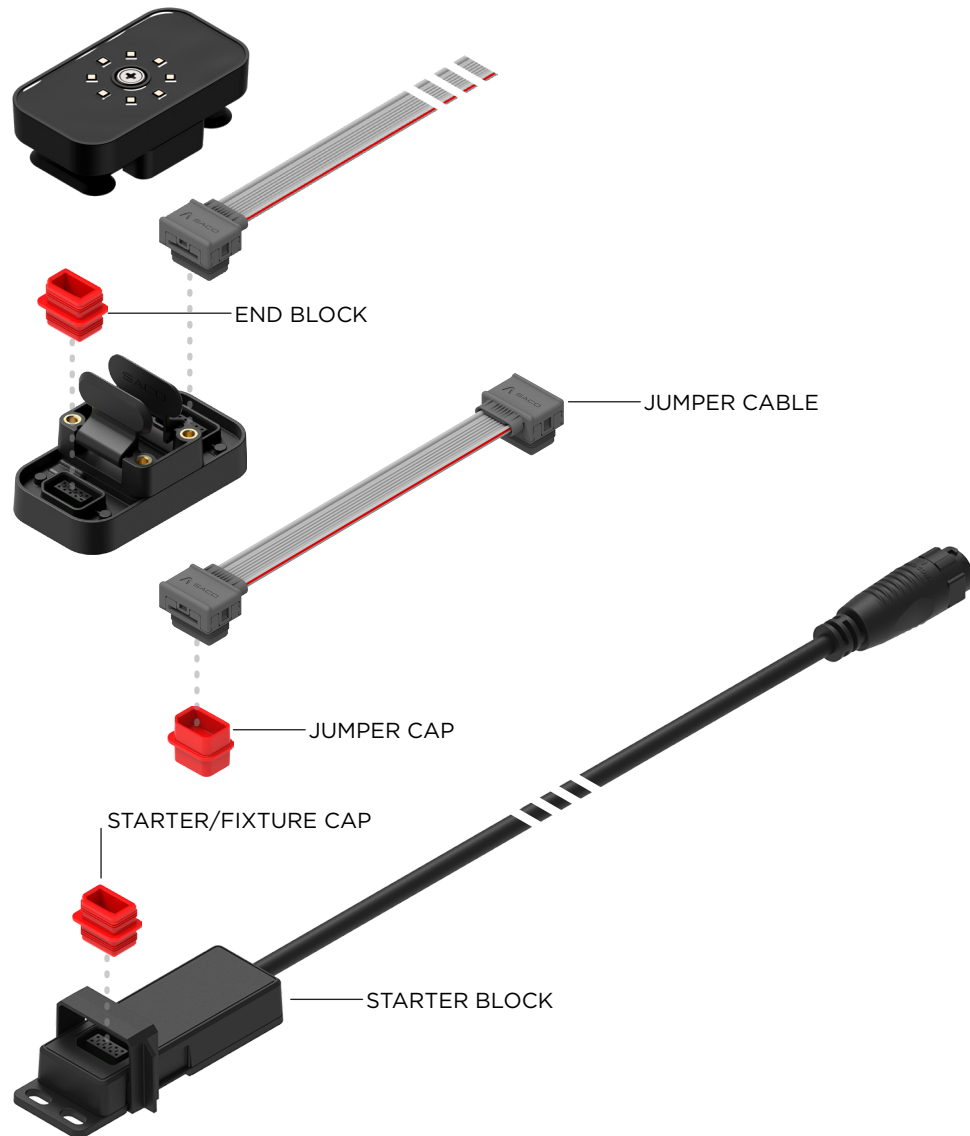
PRODUCT ORDERING CODE

<input type="text"/>	MODEL #
<input type="text"/>	LUMINAIRE SIZE S Small
<input type="text"/>	COLOR LIGHT SOURCE RGB RGB, color-changing (See light sources for power and lumen outputs)
<input type="text"/>	# LIGHT SOURCES 4 4 LEDS (1.2W, 33lm @ full-on RGB) 8 8 LEDS (2.4W, 66lm @ full-on RGB) 12 12 LEDS (3.6W, 99lm @ full-on RGB)
<input type="text"/>	BODY FINISH GRM Grey Matte (injection molded polymer) BKM Black Matte (injection molded polymer) WTM White Matte (injection molded polymer)
<input type="text"/>	FACE FINISH GRG Grey Gloss (silicone electronics potting) BKG Black Gloss (silicone electronics potting) WTG White Gloss (silicone electronics potting)
<input type="text"/>	COSMETIC PLATE FINISH NO None CRA Clear Reflective Aluminum (Mirror finish) --- Custom, please consult factory for options





COMPONENTS GUIDE



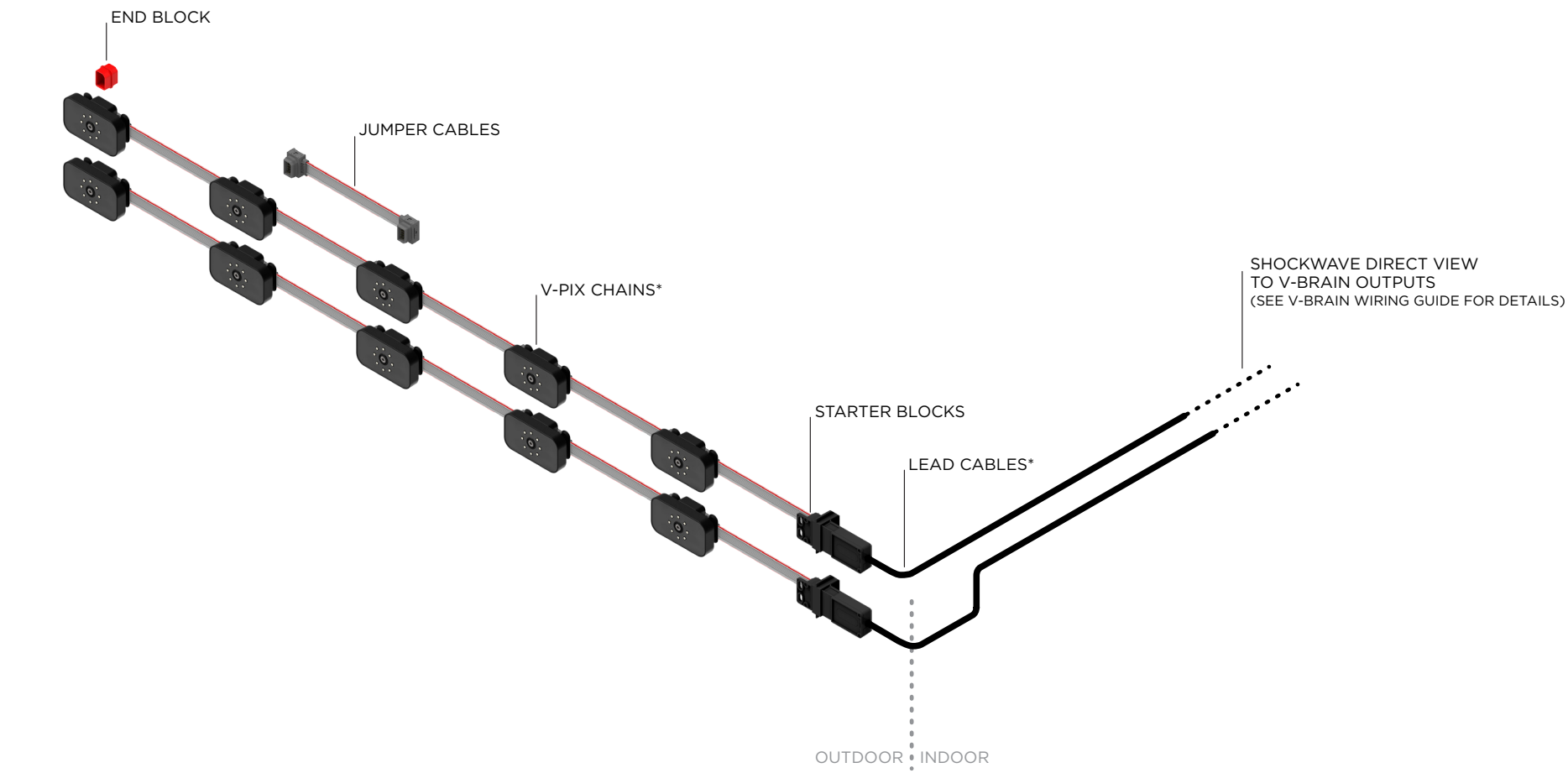
SYSTEM COMPONENTS

Companion components are required for system to be complete on the fixtures' side.
Please refer to the Wiring Guide on next page, as well as Shockwave Direct View Controls for details on compatible power and data distribution devices.

STARTER BLOCK	<ul style="list-style-type: none">Provides round to flat cable connectionOnboard electronics ensure signal integrityLocking slider snaps on jumper connection for tight fitMounting ears for simple installationInjection molded UV-stabilized polymer housingOutdoor rated silicone rubber electronics potting
CAP	<ul style="list-style-type: none">Provides product protection from dust and water ingressOne model for both fixture and starter block receptaclesOne model for covering connections on jumper cablesInjection molded UV-stabilized polymer bodyInjection molded custom gasket
JUMPER CABLE	<ul style="list-style-type: none">Custom designed IDC connector and gasketKeyed design to preserve polarityCustom designed hybrid flat cableIP65 assembly (when mated)



WIRING GUIDE



- JUMPER CABLE
- LEAD CABLE

Max jumper cable length is 5ft (1.5m) for chains up to 30 V-Pix 8. Consult factory for other system needs.
Max lead cable length to V-Brain up to 425ft (130m).



Copyright © 2020 by SACO. All Rights Reserved. Shockwave® is a registered trademark of SACO. All specifications subject to change without notice. Information furnished by SACO is believed to be accurate and reliable. However, no responsibility or liability by SACO for its use, nor for infringement of patents or other rights of third parties which may result from its use. No license is granted by implication or otherwise under any patent or other rights by SACO.

V1.3-2020-10

